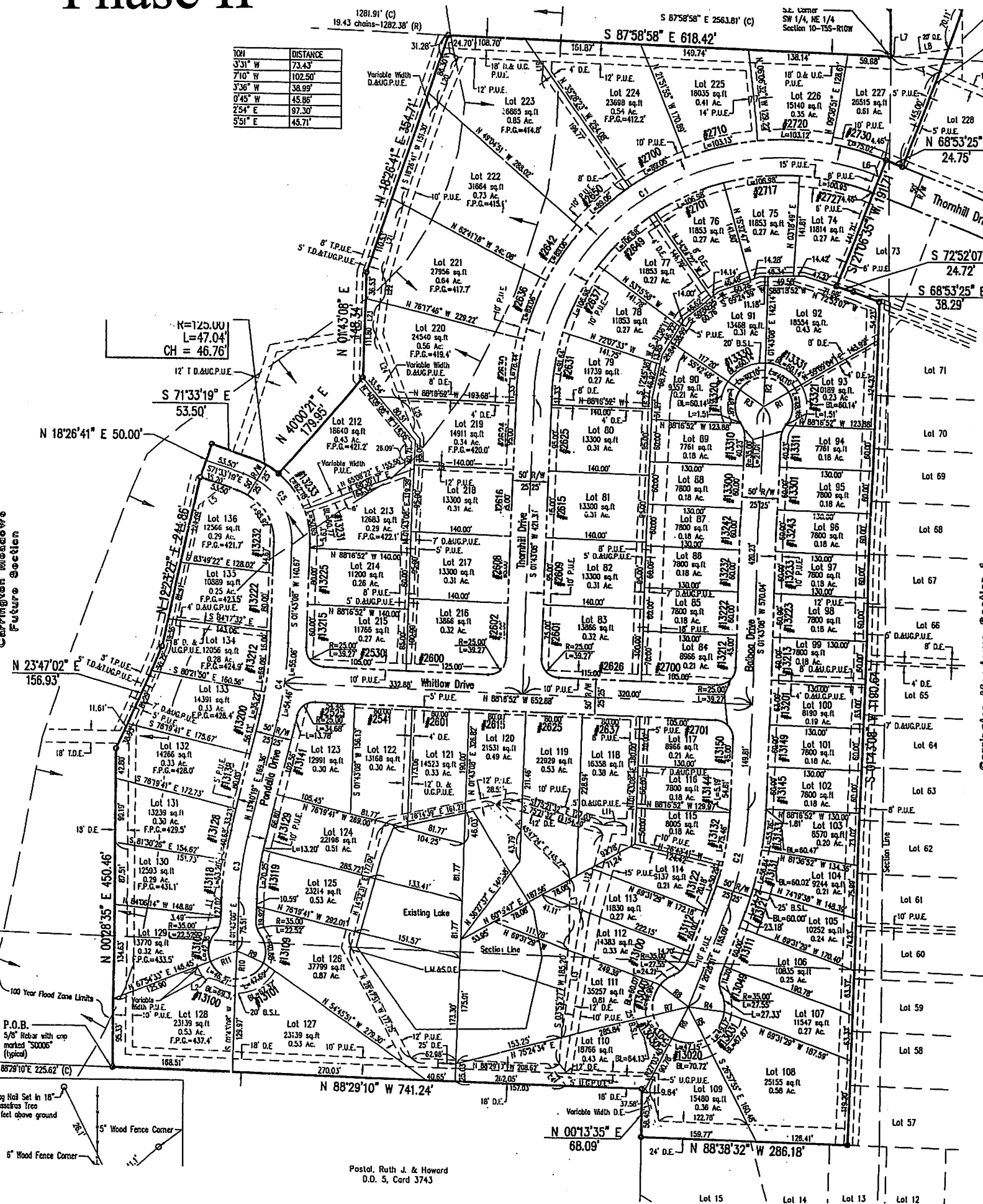


# Carrington Meadows Phase II

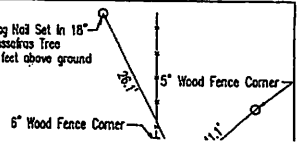
ION	DISTANCE
3'31" W	73.43'
7'10" W	102.50'
3'36" W	38.99'
0'45" W	45.86'
2'54" E	97.30'
9'51" E	43.71'

$K=125.00$   
 $L=47.04$   
 $CH=46.76$   
 12' T.D.&U.G.P.U.E.



Carrington Meadows Future Section

P.O.B.  
 5/8" Rebar with cap marked "S0006" (typical)



Postal, Ruth J. & Howard  
 O.D. S, Card 3743

Lot 15    Lot 14    Lot 13    Lot 12

# Carrington Meadows Phase III

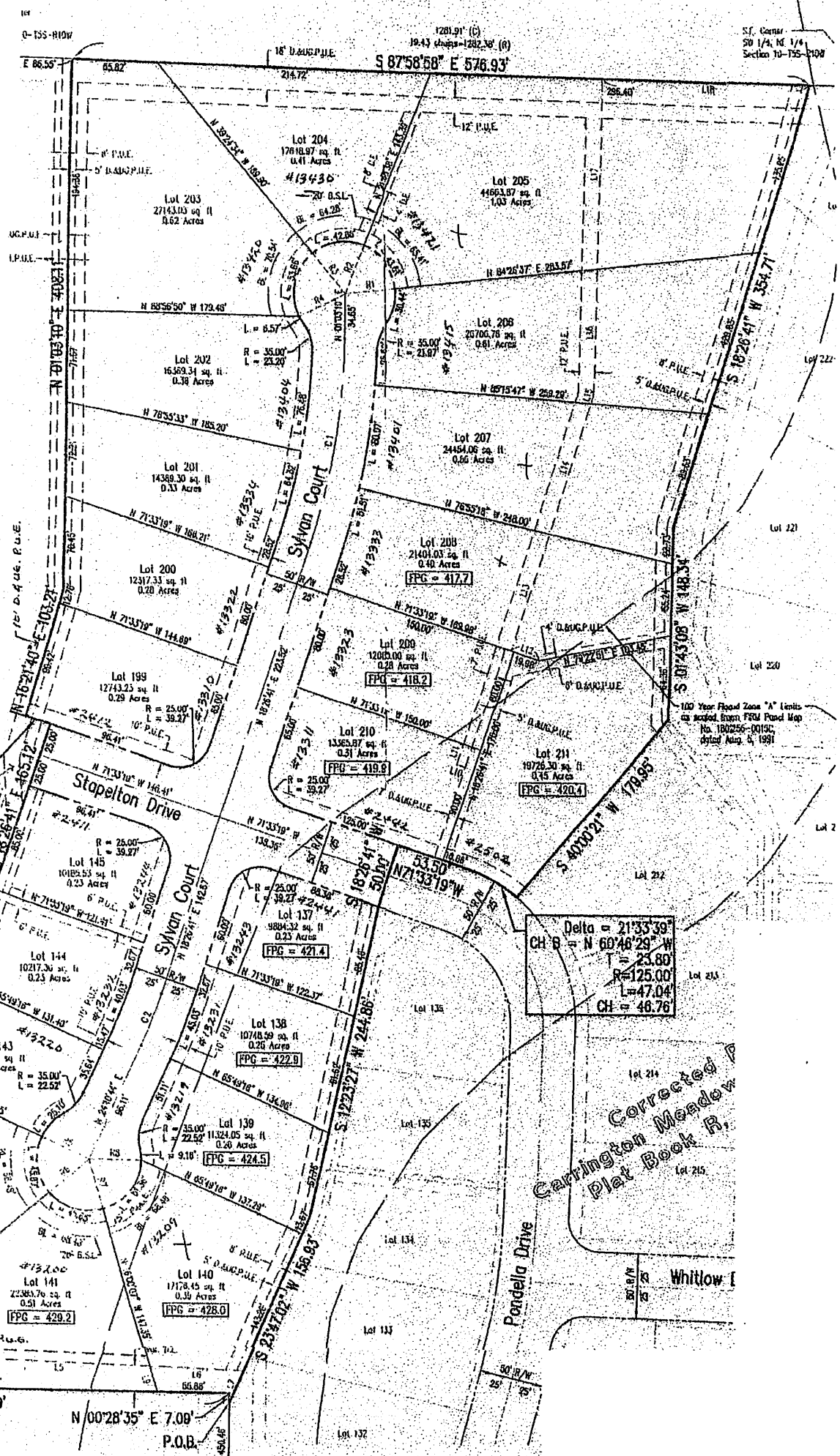
Section of Carrington Meadows

Delta = 02°05'01"  
 CH B = N 72°35'49" W  
 T = 10.00'  
 R = 550.00'  
 L = 20.00'  
 CH = 20.00'

Delta = 21°35'39"  
 CH B = N 60°48'29" W  
 T = 25.80'  
 R = 125.00'  
 L = 47.04'  
 CH = 46.76'

Corrected Carrington Meadows Plat Book B

Map High Set in 18" Spheroidal True 7 feet above ground



S.T. Corner  
 20 1/4, N. 1/4  
 Section 10-755-1108

110 Year Flood Zone "A" Limits  
 as shown from FEMA Flood Map  
 No. 180255-0019C  
 dated Aug. 4, 1991